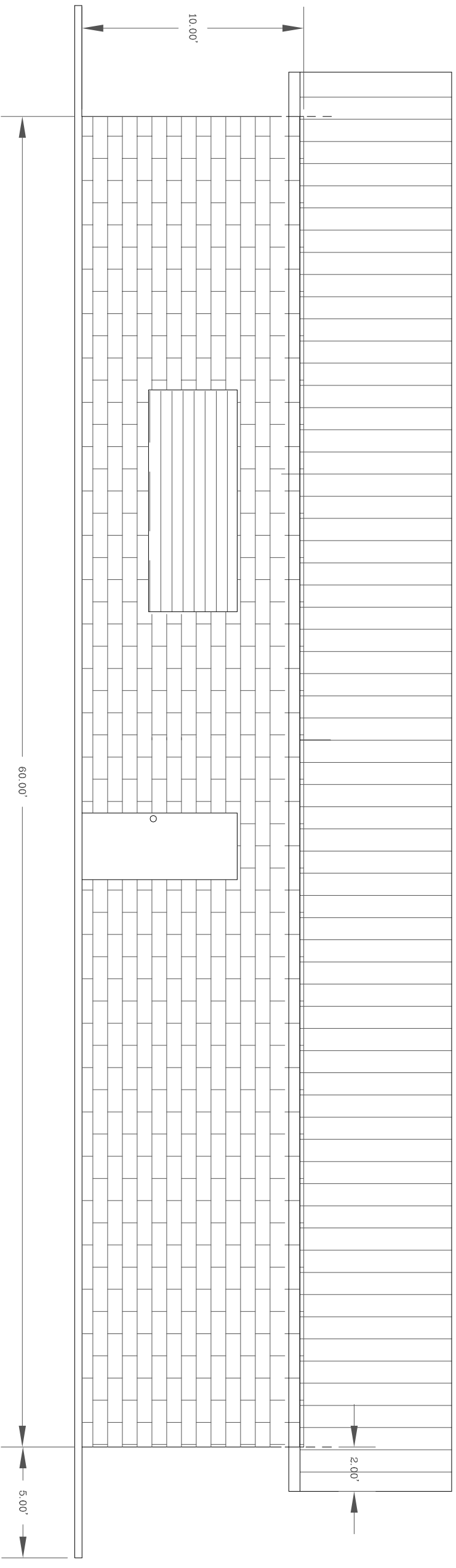
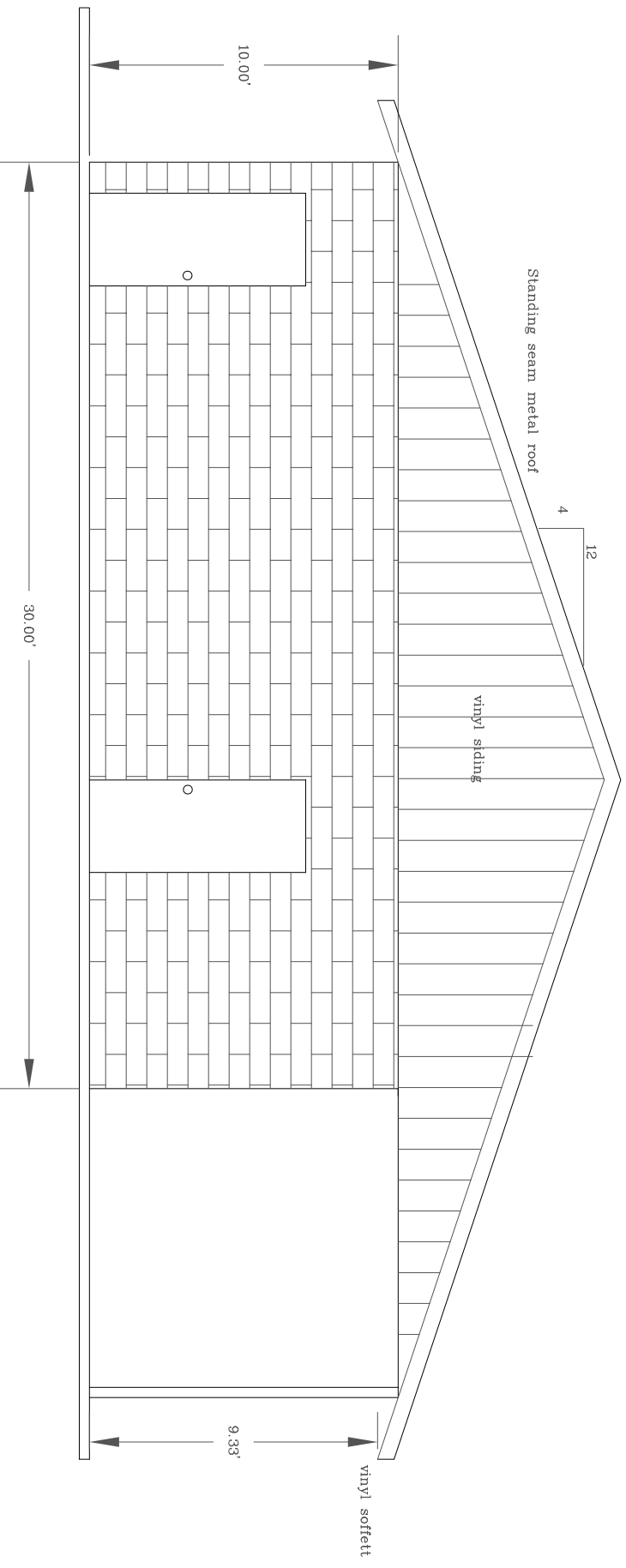


DRAWN BY:	RJD	DATE:	8-17-08
CHECKED BY:	RJD	DRAWING NO.:	1
APP. NO.:	IMPACT SOCCER	SHEET	1 OF 2



FRONT ELEVATION

3/16 = 1 ft



END ELEVATION

3/16 = 1 ft

NOTES:  
 Floor to be 4" concrete slab over 6 mil vapor barrier and 4" crushed stone.  
 Exterior walls to be 8" split face CMU (insulated).  
 Standing seam metal roof over engineered wooden trusses.  
 Doors (main) to be steel insulated with lock set and dead bolt(keyed).  
 Roof (up doors) to be steel insulated with manual pulls.  
 Meeting room, concession area and staff restroom to be air conditioned.  
 Remainder of building to be heated and ventilated.  
 Interior walls to be 2x4 stud walls with 5/8" GYP bd. painted.  
 (except walls of restrooms to be 8" CMU)  
 Electrical service to be 200 amp, 230 volt.

IMPACT SOCCER FACILITY